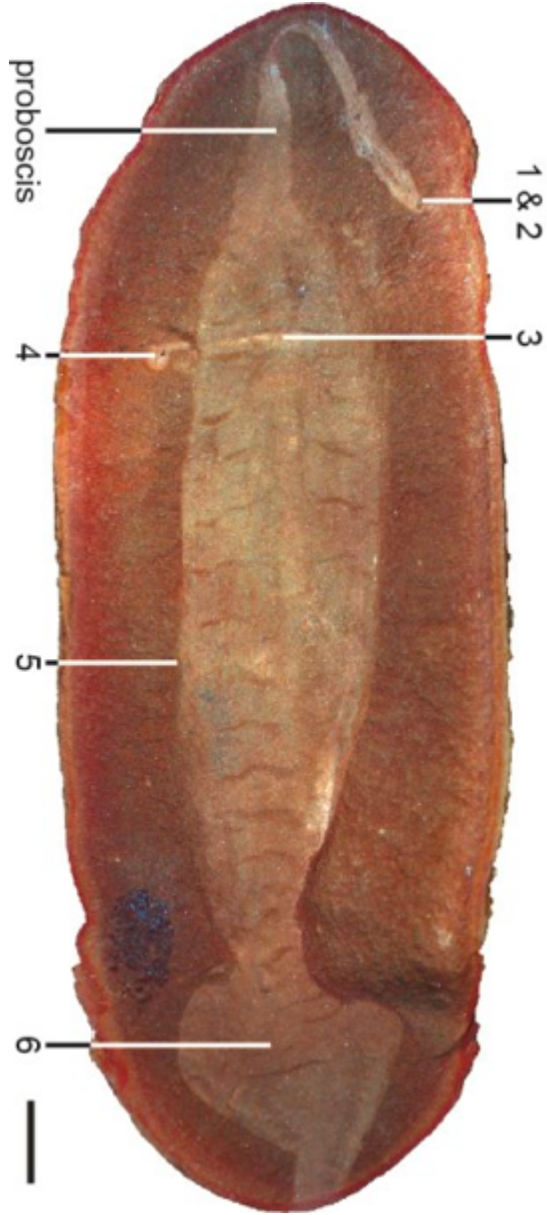
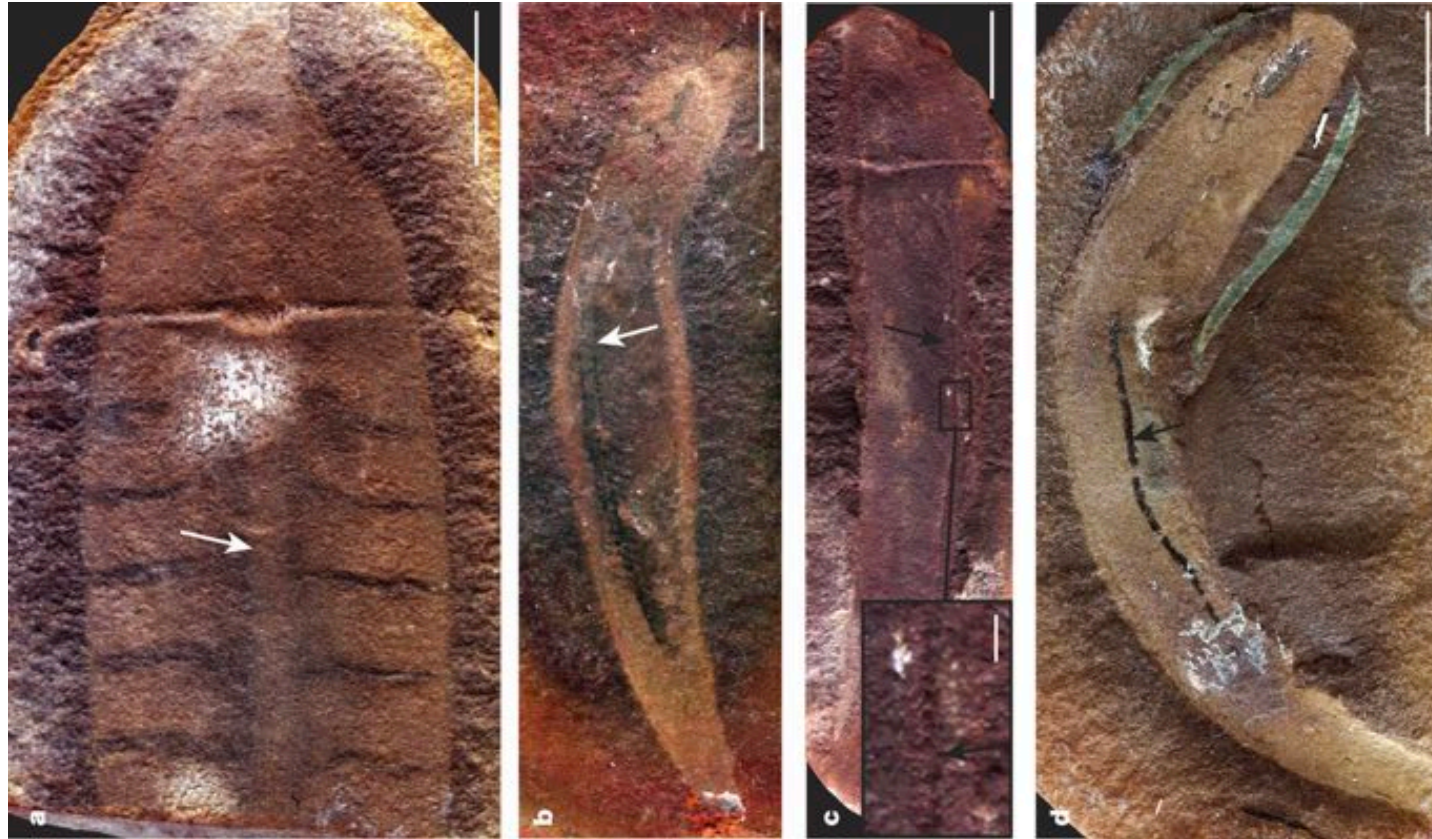


Location: Illinois, USA (50 miles from Chicago!!!)

Size: 6-12in

INITIAL EVIDENCE





Comparative Specimens

Squid



Lamprey



REVEAL

	1 Appendage	2 Stylets in terminal structure	3 Transverse bar	4 Distal structures on transverse bar	5 Transverse sigmoidal bands on trunk	6 Extensions to the posterior body	Proposed affinity
Richardson (1966)	Jaw apparatus	Stylets/teeth	N/A	Bar organs	Segmentation	Lateral tail fins	<i>Incertae sedis</i>
Johnson & Richardson (1969)	Grasping claw Jaw	Stylets	Sensory organs Otocysts Hydrodynamic stabilisers	Eyes	Segmentation	Lateral tail fins	Nemertea Polychaeta Sipunculidea Arthropoda Echiuroidea
Foster (1979)	Buccal mass	Teeth	Eye stalks	N/A	Segmentation Muscle bands	Lateral tail fins Dorso- ventral tail fins	Nemertea Polychaeta <u>Mollusca</u>
Beall (1991)	Grasping claw Jaw Buccal mass	Teeth	Paired copulatory organs Setae	N/A	Segmentation Muscle bands	Dorso- ventral tail fins	Mollusca <u>Conodonts</u>
Schram (1991)	N/A	N/A	N/A	N/A	Segmented muscles	Caudal appendage	Nemertea Annelida
Proposed herein:	Proboscis	Tentative: Teeth or dermal denticles?	Eye stalks	Eyes	Possible Myomeres?	Dorso- ventral tail fins	Non- osteichthyan total group vertebrate; possible total group gnathostome

Numbers across
top match
number labels on
the initial
evidence image

REVEAL

