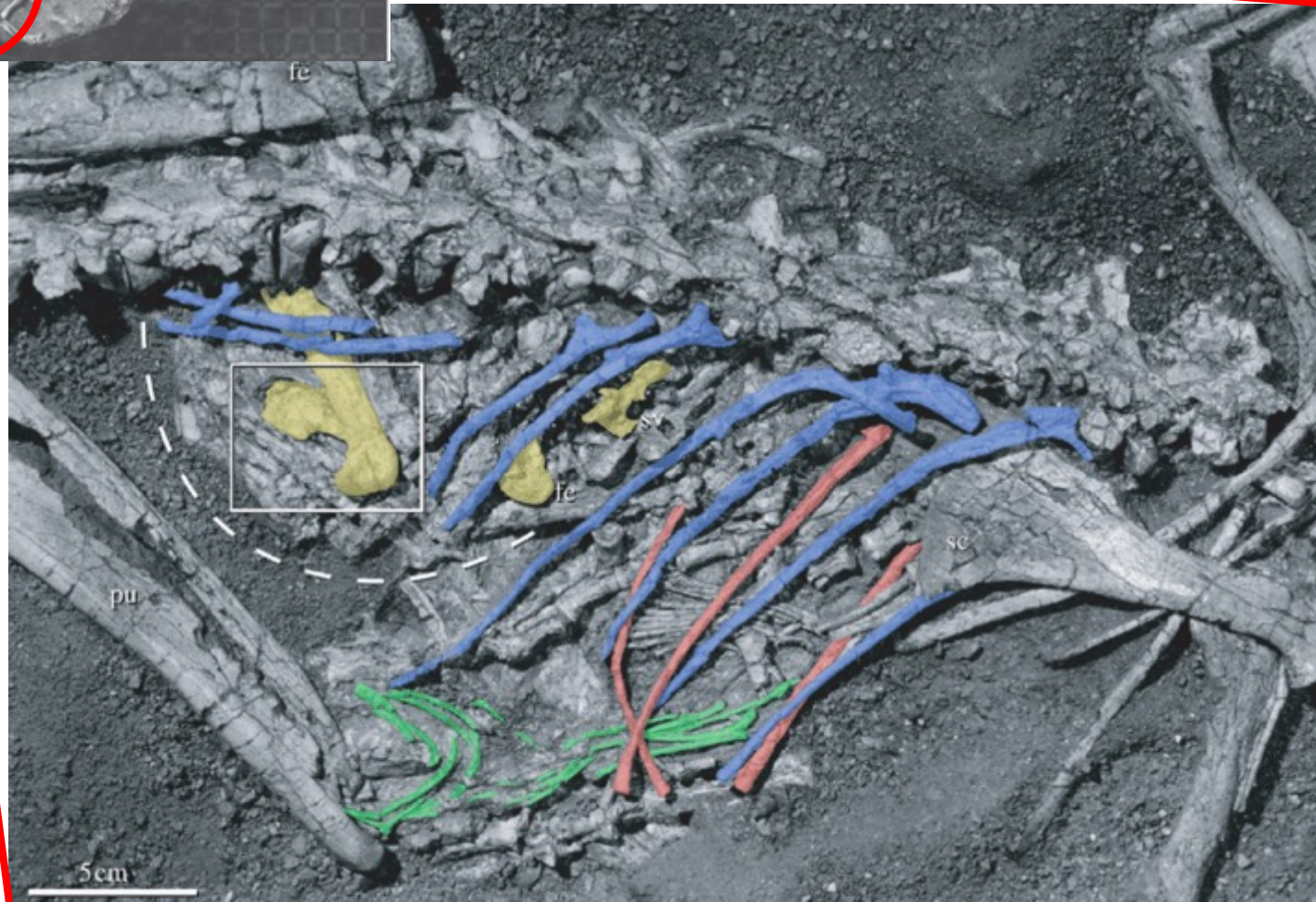
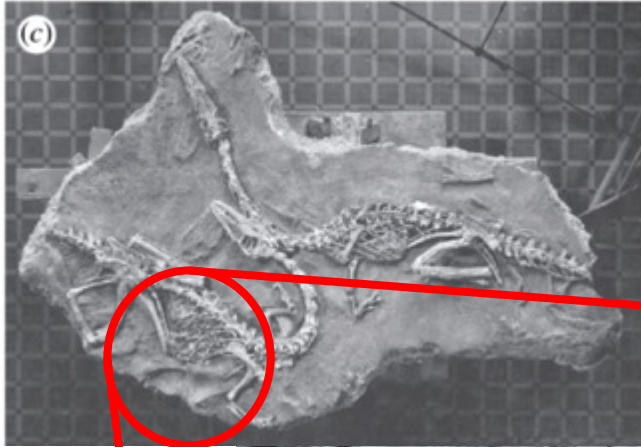


Location: New Mexico & Zimbabwe
Size: 8 ft long

INITIAL EVIDENCE





Detail of abdominal cavity of this species showing intact stomach (dotted line) with preserved contents highlighted in yellow. Right femur and left ilium, left femur (fe) and sacral vertebra (sv) of stomach content material. Intact gastralia in green, right dorsal ribs in blue and left dorsal ribs in red.

NEW EVIDENCE



Lots and lots of this species' fossil found together in a quarry

Comparative Specimens

T-Rex



Emus



REVEAL

