

Location: California
Size of fossil: 8ft long

INITIAL EVIDENCE

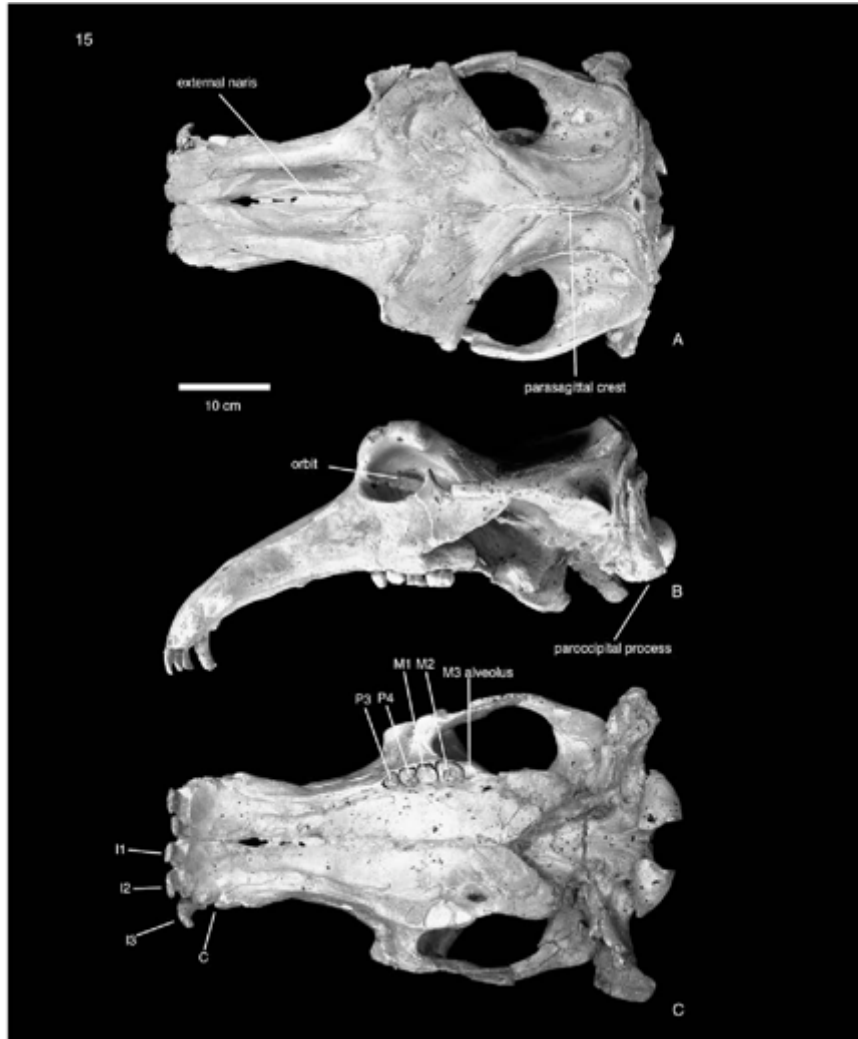
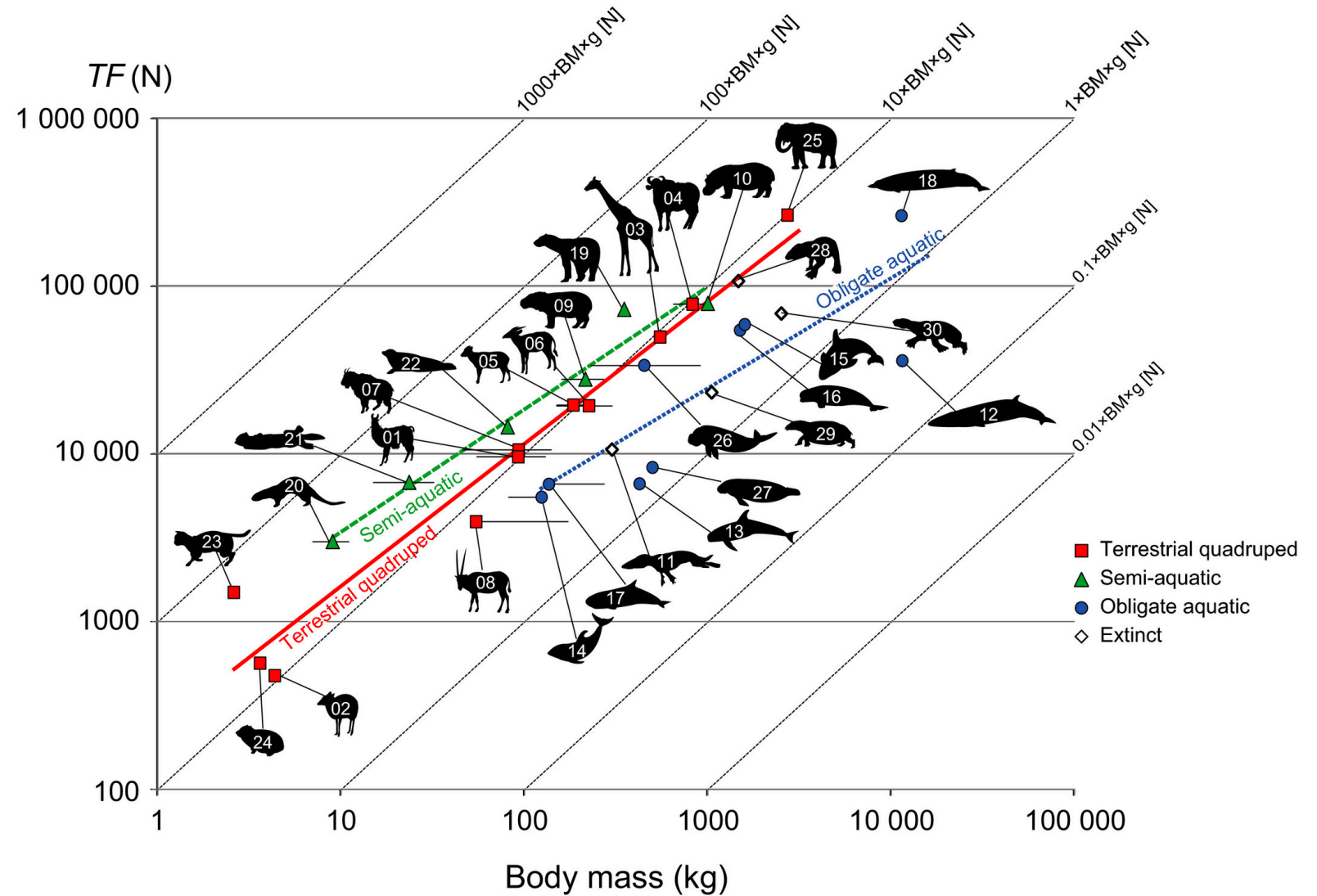
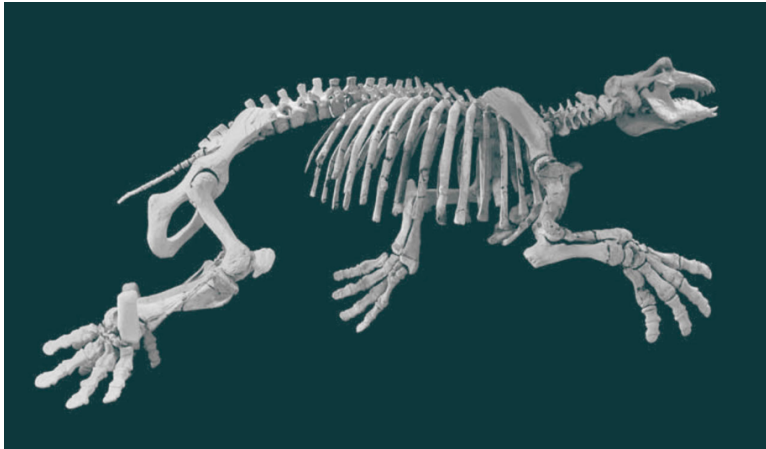




Figure 18. *Neotamias eximius* new series and new species. holotype. F&M 160140. right hind limb as articulated for the mounted skeleton



A study was done on thoracic bone strength among terrestrial and aquatic animals. It was found that this creature (#30) has similar thoracic bone strength as that of a Beluga whale (#16)



Comparative Specimens

Hippopotamus



Elephant



Manatee



REVEAL

