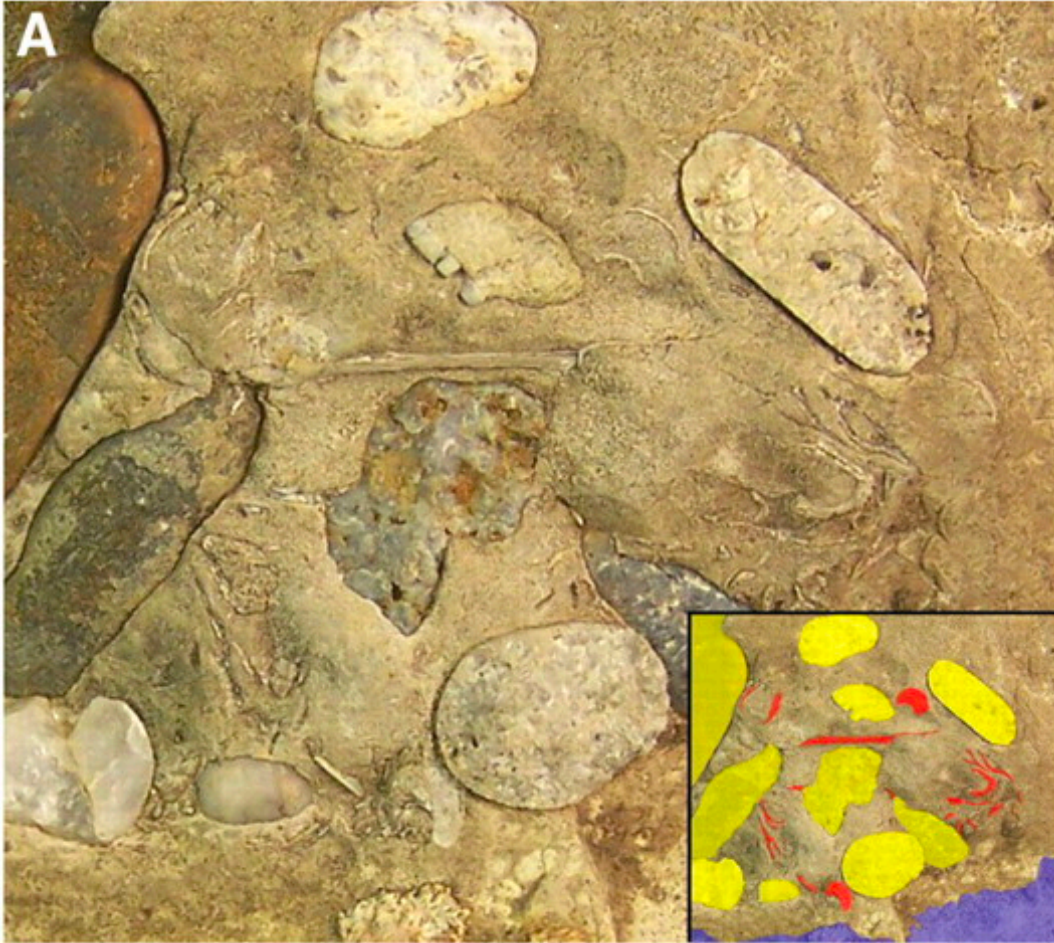


Location: Kansas, USA
Size: 16 feet long

INITIAL EVIDENCE







Close-up of a block containing stomach content from the same species. Interpretation of the block, showing gastroliths (yellow), molluscan shell (red), and parts of the fossil creature's ribs (blue)



A fossilized bromalite (stomach contents) from this same species is composed mainly of the compacted, crushed shells of bivalves, gastropods, and crustaceans

Comparative Specimens

Diplodocus



Modern Whales



REVEAL

