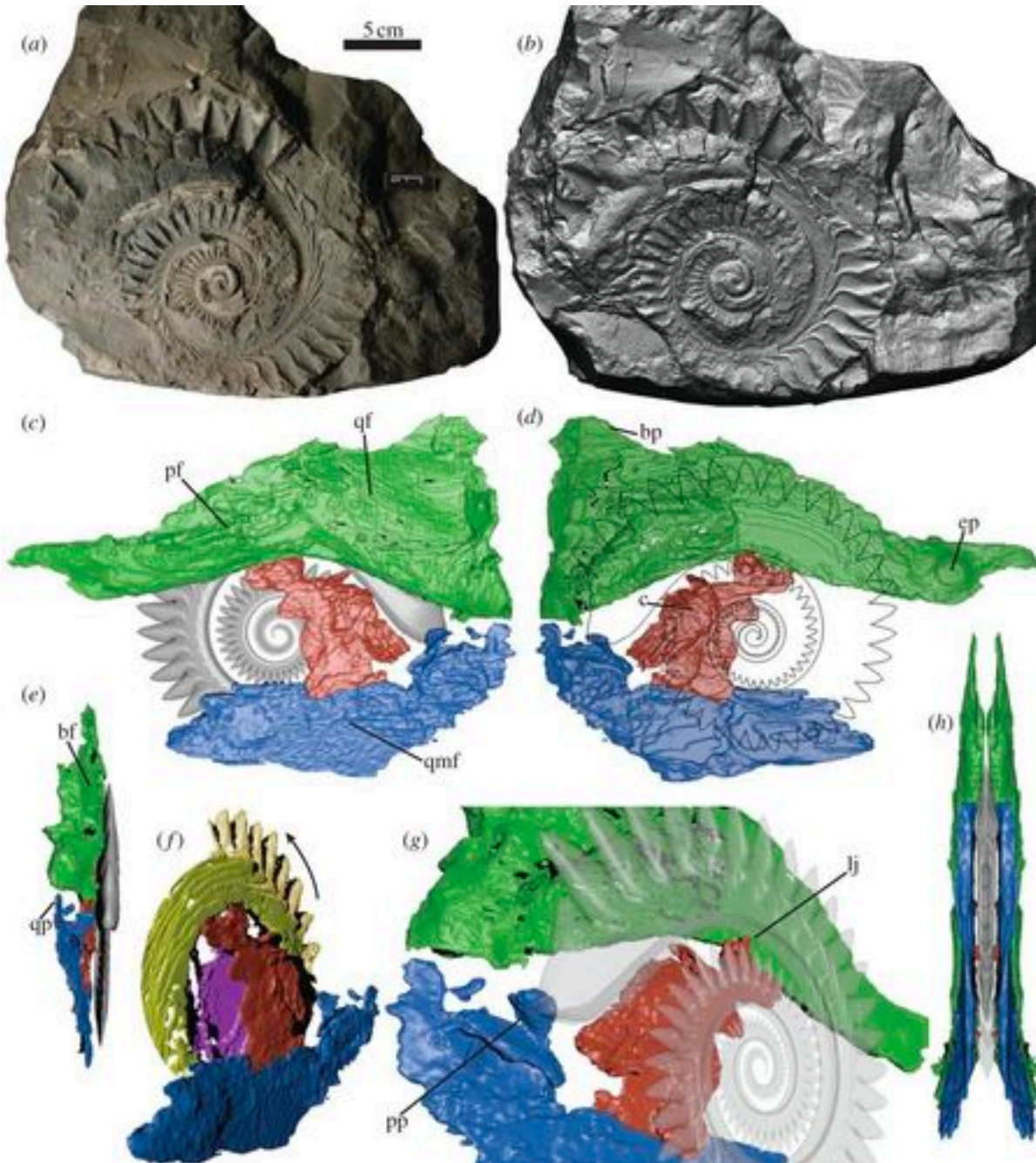


Location: Idaho, USA – but also North America, Eastern Europe, Asia, & Australia
Size of fossil: 6.7 inches in diameter

INITIAL EVIDENCE



NEW EVIDENCE



(a) Photograph and (b) surface scan of fossil, positioned anterior to the right, imbedded in limestone slab. (c) CT model of specimen in lateral, (d) medial, (e) posterior, (f) oblique lateral, (g) oblique medial and (h) ventral views. Modelled tooth whorl (grey, black outline) surrounded by palatoquadrate (green), Meckelian (blue) and labial (red) cartilages. (d) Asterisks mark widened part of labial cartilage corresponding to successive root volutions. (f) Palatoquadrate removed to show scanned portion of root (dark yellow), tooth crowns (pale yellow) and tessellated cartilages of the inner whorl (purple). Arrow indicates direction of root growth and advancement to form spiral. (h) Right side of image mirrored to show paired jaw elements surrounding the whorl.

Mecklian Cartilage - piece of [cartilage](#) from which the mandibles (lower jaws) of [vertebrates](#) evolved

palatoquadrate. : of, relating to, or replacing the palatine and quadrate bones especially : constituting a series of bones or a continuous cartilaginous rod that forms part of the upper jaw or roof of the mouth of most vertebrates other than mammals.

Comparative Specimens

Nautilus



Pangolin



Shark



shutterstock.com • 785277088

REVEAL

