

Australopithecus anamensis

Location: Kenya

Age: 4.2 – 3.9 Ma BP

Habitat: grassy woodlands

Features:

- smaller canines
- large molars with thick enamel
- ape body proportions
- Parallel dental arcade
- Unequal 3rd premolar cusps
- Curved finger bones
- 3.3 ft tall



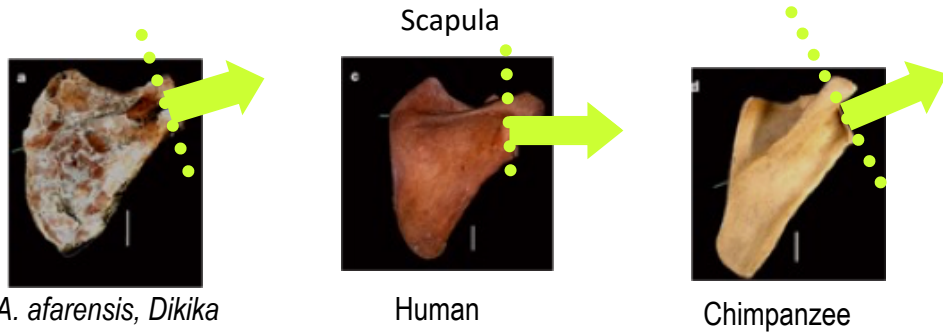
Australopithecus afarensis

Location: Laetoli (Tanzania), Hadar (Ethiopia), Koobi Fora (Kenya)

Age: 4.0 – 3.0 Ma BP

Habitat: woodland and dry savanna

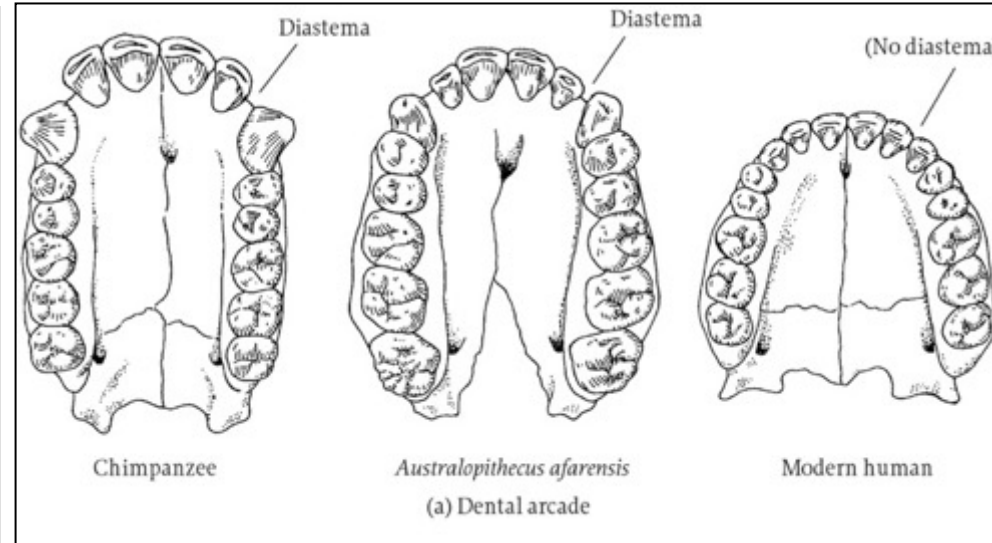
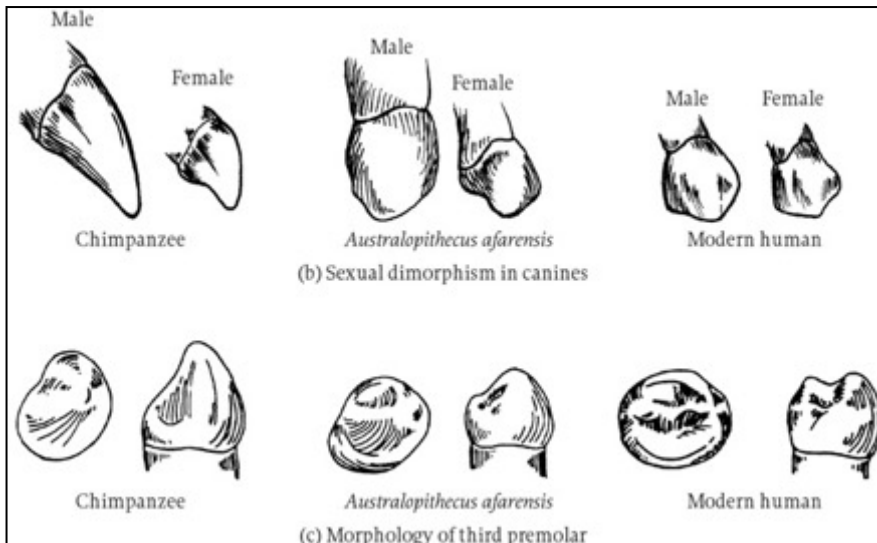
Features: 430 cc cranial capacity
Ape-like hyoid
Small canines
Equal sized cusps on 3rd premolar
Some what parabolic dental arcade



A. afarensis, Dikika

Human

Chimpanzee



Chimpanzee

Australopithecus afarensis
(a) Dental arcade

Modern human

Australopithecus africanus

Location: Taung, Sterkfontein, Makapansgat (South Africa)

Age: 3.0 – 2.2 Ma BP

Habitat: open grasslands

Features

- 450 cc cranial capacity
- Anterior pillars
- Larger molars
- Larger jaws
- Fingers NOT curved
- Ape-like leg to arm ratio – short legs and long arms



Australopithecus garhi

Location: Ethiopia

Age: 2.5 mya

Habitat: Grasslands or lakeshore

Features:

- brain size: 450cc
- very prognathic face
- large canines, molars, and premolars
- sagittal crest
- Equal size cusps on 3rd pre-molar
- More human arm-leg length ratio
- associated with tools
- Curved toes



Australopithecus sediba

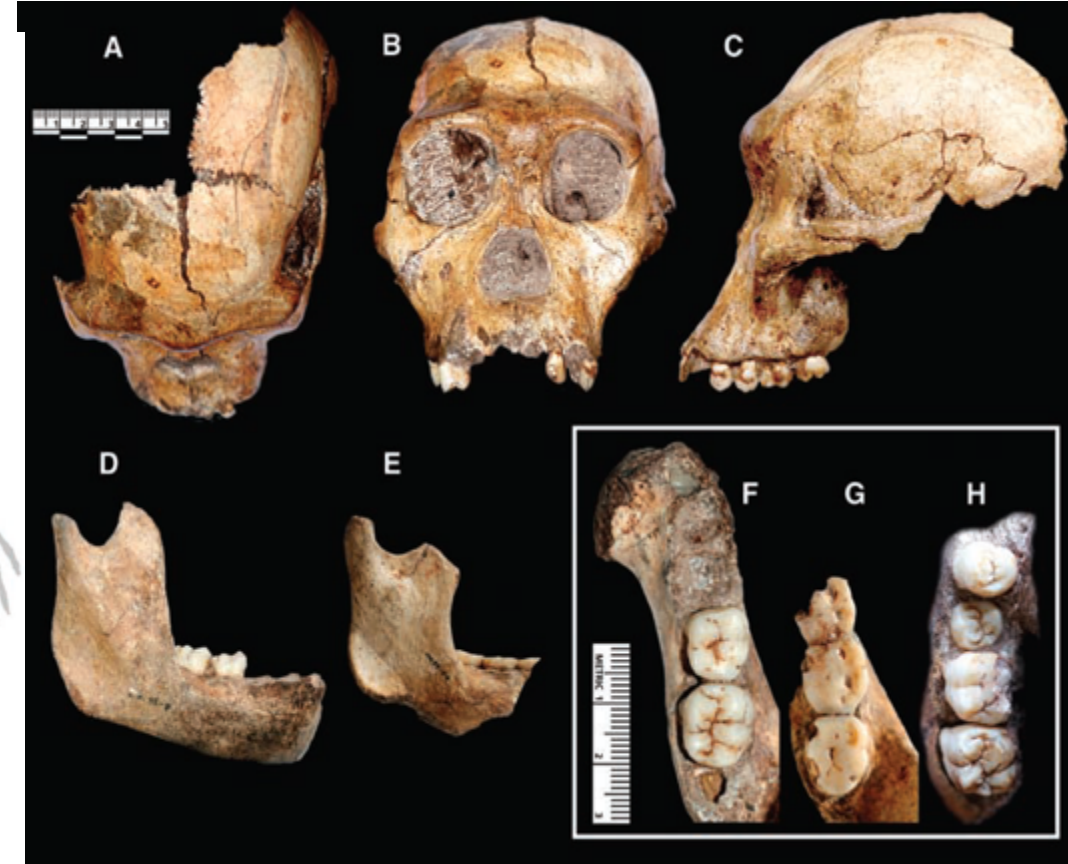
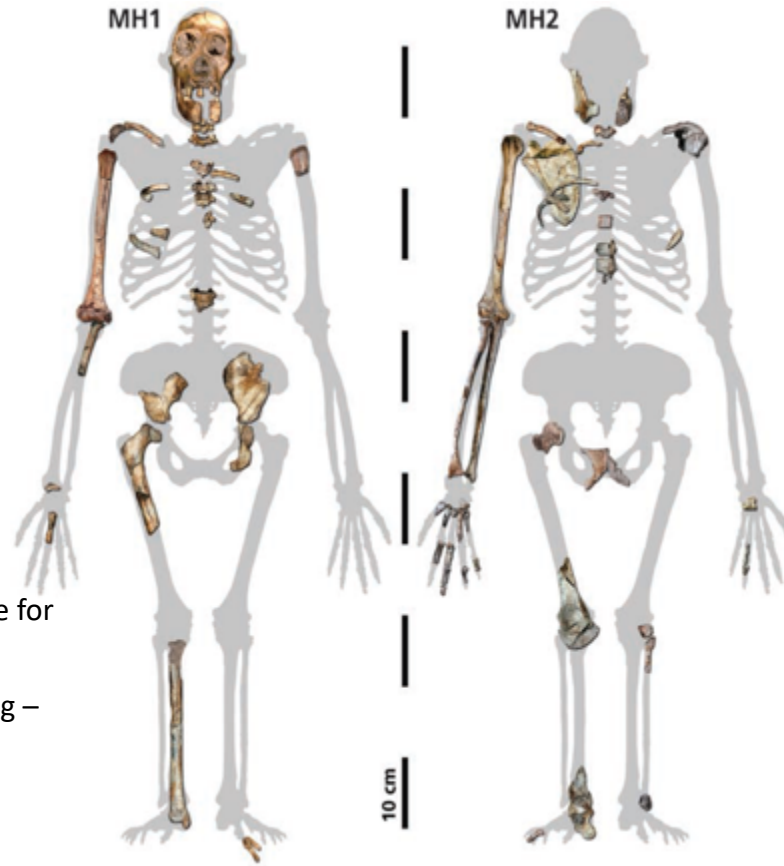
Location: Malapa Cave, South Africa

Age: 2.0 mya

Habitat: open grasslands

Features

- Big face
- Well developed sagittal crest
- Likely ate significant amounts of low quality vegetation such as grass – like other robust australopithecines
- 420 cc cranial capacity
- Long arms for body size and strong musculature for gripping things – like tree branches
- Long thumb – associated with precision gripping – perhaps for tool use



Australopithecus (Paranthropus) aethiopicus

Location: West Lake Turkana (East Africa)

Age: 2.5 MYA

Habitat: Open grasslands

Features: mixed between gracile and robust

- Tiny brain (410 cc)
- Prognathic face
- Sagittal crest
- Wide zygomatics
- Huge molars



KNM-WT 17000

Australopithecus (Paranthropus) robustus

Location: Kromdraai, Swartkrans, Drimolen (South Africa)

Age: ~ 2.0 –1.0 MYA

Habitat: open grasslands

Features:

- very large jaw and molars
- small incisors and canines
- Sagittal crest
- Under 4ft tall
- 495-530 cc cranial capacity



SK 48

Australopithecus (Paranthropus) boisei

Location: Olduvai Gorge (Tanzania), Koobi Fora (Kenya), Omo (Ethiopia)

Age: 2.2 – 1.3 MYA

Habitat: open grassland

Features:

- More robust even than *A. robustus*
- Small anterior teeth
- Huge molars
- Molarized premolars
- 510 cc cranial capacity



OH 5



ER 406

Australopithecus (Kenyanthropus) platyops

Location: Lake Turkana (Kenya)

Age: 3.5 – 3.2 mya

Habitat: woodlands

Features:

- 400-500 cc cranial capacity
- Flat face
- Small Molars



Welcome...Genus *Homo*!

Location: Olduvai Gorge, Lake Turkana, Middle Awash, Omo, Uraha, Sterkfontein

Age: 2.5-1.8 mya

Habitat: woodlands

Features:

- 650 cc cranial capacity
- smaller face and jaws
- More generalized diet

