



Figure 1: Two room Irish cottage on Árainn Mhór with a window for each room.



Figure 2: Irish built Greene Homestead on Beaver Island. (Mary Beth (Greene) Nelson pers.comm., 2011).



Figure 3: While this house does not exist on Beaver Island it is an accurate example of what a typical Mormon domestic space would have looked like (Van Noord 1988:266).

Photograph courtesy of the State Historical Society of Wisconsin



Figure 4: Photograph of Greene Family Homestead on Árainn Mhór (Mary Beth (Greene) Nelson, pers. comm., 2011).

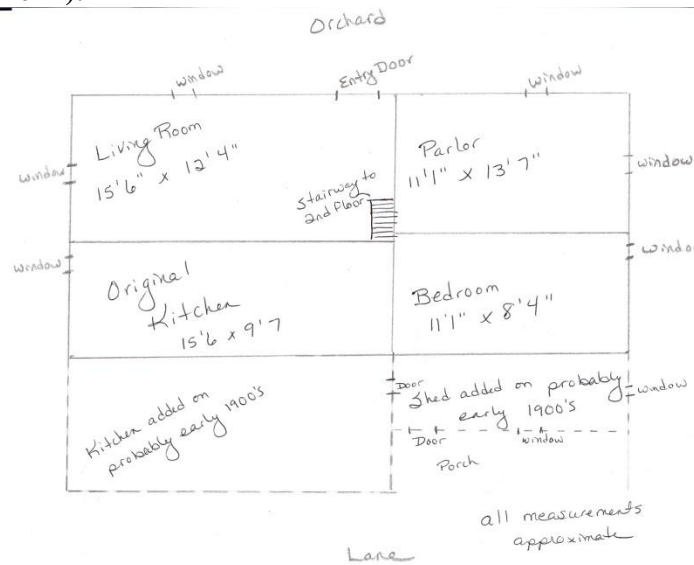


Figure 5: Sketch of the Greene Homestead Floor plan on Beaver Island. (Mary Beth (Greene) Nelson, pers. comm., 2011).